



2-Wire Liquid Analyzer
FLXA21

2-Wire Liquid Analyzer
FLXA21

Bulletin 12A01A02-01E

www.yokogawa.com/an/

The FLXA21 Modular 2-wire Liquid Analyzer can measure several different liquid properties and supports the use of up to two sensors.

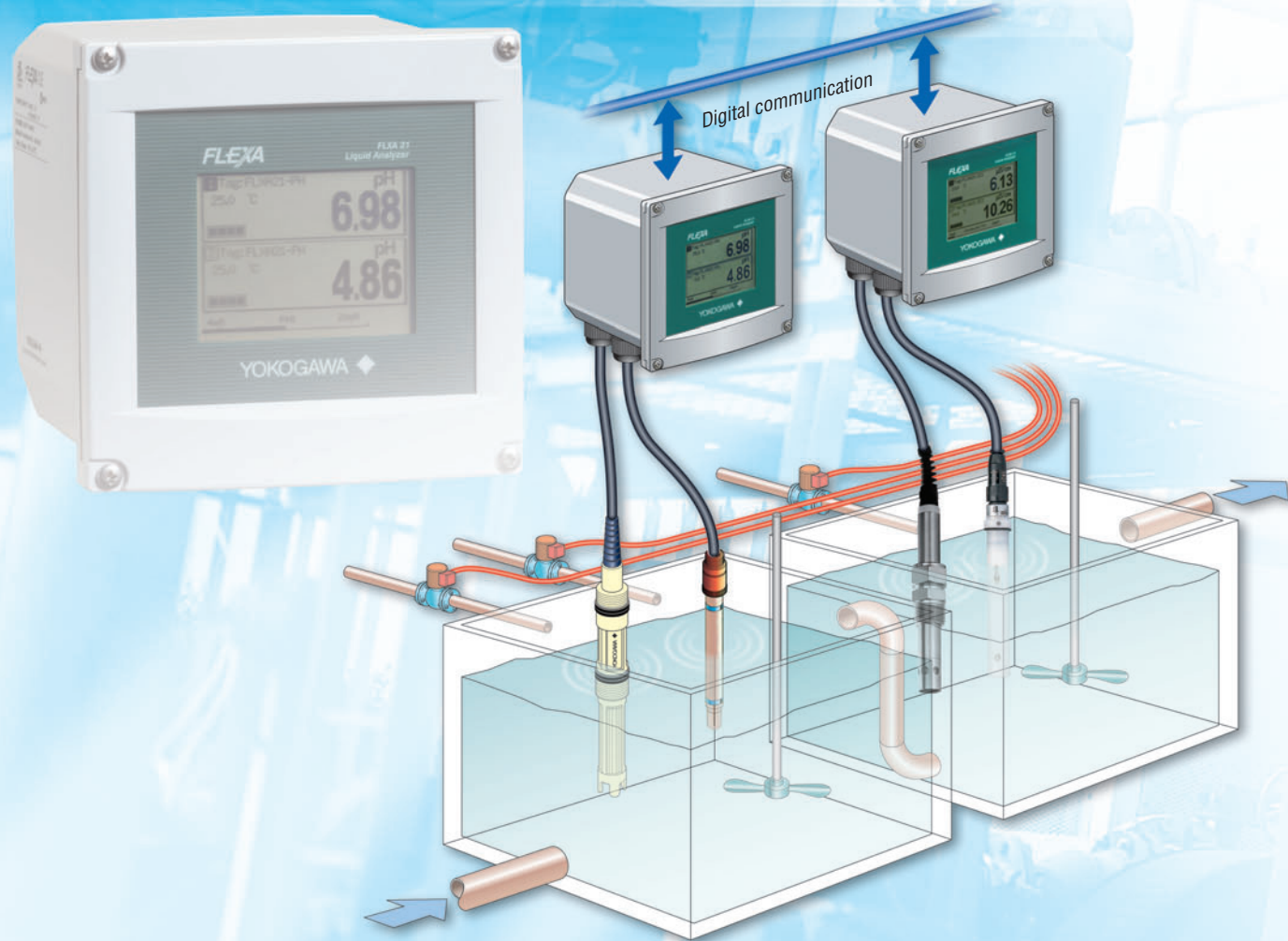
Modular 2-wire Liquid Analyzer

FLXA21

The FLXA21 is a next-generation modular liquid analyzer that can be flexibly configured to measure pH/ORP, contacting conductivity, inductive conductivity, or dissolved oxygen.

The FLXA21 also supports the installation of up to two sensors of the same type, thereby reducing installation costs and saving space in addition to enabling the configuration of a highly reliable redundant system.

It has reliable and advanced features and functions such as a touch screen for improved operability, sensor self-diagnosis, maintenance time estimation, and 12 language display options.



Support of Up to Two Sensors and Digital Communications for Increased Reliability and Reduced Maintenance and Instrumentation Costs

- The FLXA21 supports the use of up to two sensors*.

* The two sensors must be of the same type.
* With inductivity sensors, only one sensor may be connected.
* Connection of one digital FU20F pH/ORP sensor.

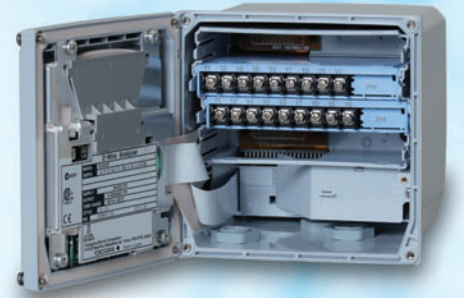
- Redundant system with two sensors increases measurement reliability.
- Measurement at two points with a single analyzer reduces installation costs and saves space.

- Interruption-free measurement is assured even during maintenance.
- Digital communications options for reduced maintenance and instrumentation costs
HART communications
FOUNDATION™ Fieldbus and Profibus options will also be available in the future.

Modular Design for Increased Scalability

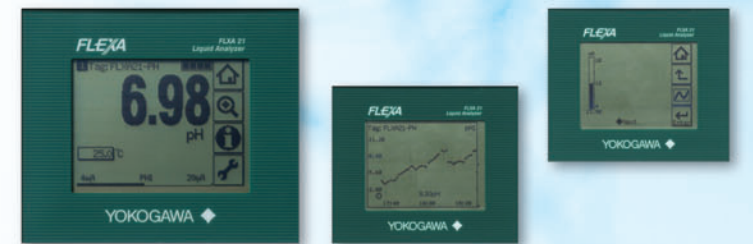
- The modular design enables the construction of a variety of systems.
- System changeover can be done quickly and easily by replacing and adding modules*.
- Users can opt to do without a display and can also select the case material (plastic or stainless steel).
- Intrinsically safe type of ATEX, IECEx, FM, CSA and NEPSI, and non-incendive of FM and CSA.

* Should be done by Yokogawa Service.



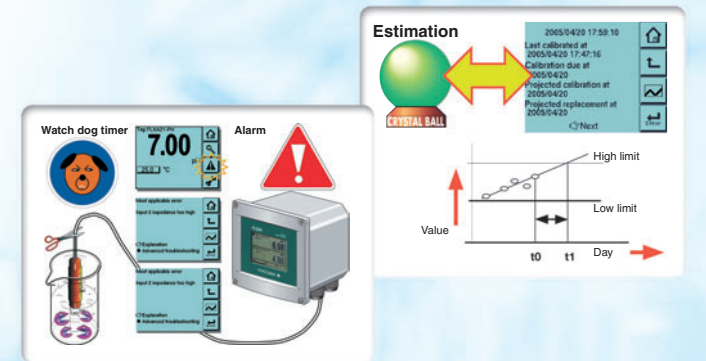
Touch Screen for Improved Operability

- The interactive touch screen is easy to use and helps eliminate operator errors.
- Several different display modes are available.
- In the event of an error, the screen displays an error code and indicates the corrective action to be taken.
- With routine operations, prompts and other messages eliminate the need to consult the instruction manual.



Advanced Functions

- Sensors with self-diagnostics capabilities
Continuous measurement of sensor impedance, asymmetric potential, and slope, and continuous monitoring for electrode contamination/damage, burnout, and decline in measurement liquid level (ex. pH Analyzer)
- Display of sensor status and estimated maintenance time
Save the latest five calibration results and estimate the future maintenance and calibration times.
- Quick setup
Screen instructions (guidance messages) make setup quick and easy.



Full Sensor Line-up for a Broad Range of Applications

- The FLXA21 can be connected to a wide variety of pH/ORP, contacting conductivity, inductive conductivity, and dissolved oxygen sensors.

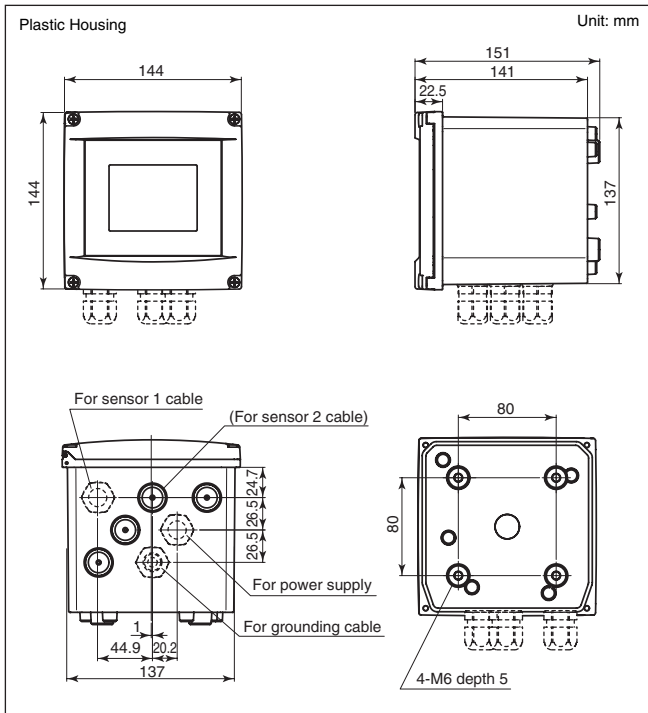


General Specifications

Housing	Case: Plastic or stainless steel (with or without urethane or epoxy coating) Window: Polycarbonate
Protection	IP66 (except Canada), Type 4X (except Canada), Type 3S/4X (Canada)
Outline Dimensions	Plastic: 144 (L) x 144 (W) x 151 (D) mm Stainless steel: 165 (L) x 165 (W) x 160 (D) mm
Weight	Approx. 1 kg (Plastic housing), Approx. 2 kg (Stainless steel housing)
Display	Black/white LCD with a touch screen (213 x 160 pixels)
Mounting	Pipe, wall or panel mounting Conduit adapter: G1/2, 1/2 NPT or M20 x 1.5
Environmental Conditions	Ambient temperature: -20 to 55°C Storage temperature: -30 to 70°C Ambient humidity: 10 to 90%RH (40°C) (Non-condensing)
Power Supply	Nominal 24 V DC loop powered system
Regulatory Compliance	Safety: EN61010-1, UL 61010-1, CAN/CSA C22.2 No.61010-1 EMC: EN61326-1 Class A, Table 2 (For use in industrial locations) EN61326-2-3, AS/NZS CISPR11 Korea Electromagnetic Conformity Standard
Hazardous Location Approvals	ATEX, IECEx, FM, CSA, NEPSI
Output Signal	One isolated output of 4 to 20 mA DC, 2-wire system
Communication	HART

Refer to the GS12A01A02-01E for detailed specification.

Outline Dimensions



Model & Suffix Codes

Model	Suffix code	Option code	Description
FLXA21	-----	-----	2-Wire Analyzer
Power Supply	-D	-----	Always -D
Housing	-P -S -U -E	-----	Plastic Stainless steel Stainless steel + urethane coating Stainless steel + epoxy coating
Display	-D	-----	Anti-glare LCD
Type	-AA -EA -ES	-----	General purpose ATEX, IECEx, FM, CSA, NEPSI (Note 5) ATEX, IECEx for SENCOM sensor (Note 9)
1st input	-P1 -C1 -C5 -D1 -S1	-----	pH/ORP (Note 7) Conductivity (SC) Inductive conductivity (ISC) Dissolved oxygen (DO) pH/ORP (SENCOM sensor) (Note 8)
2nd input (Note 1)	-NN -P1 -C1 -D1	-----	Without input pH/ORP (Note 7) Conductivity (SC) Dissolved oxygen (DO)
Output	-A	-----	4-20 mA + HART
—	-N	-----	Always -N
Language set (Note 2)	-LA	-----	English and 11 languages
Country (Note 3)	-N -J	-----	Global except Japan Japan
—	-NN	-----	Always -NN
Option	Mounting hardware Hood Tag plate Conduit adapter Measurement law	/UM /U /PM /H6 /H7 /H8 /SCT /CB4 /CD4 /CF4 /K	Universal mounting kit (Note 4) Pipe and wall mounting hardware Panel mounting hardware Hood, stainless steel Hood, stainless steel + urethane coating Hood, stainless steel + epoxy coating Stainless steel tag plate Conduit adapter (G1/2 x 4 pcs) Conduit adapter (1/2NPT x 4 pcs) Conduit adapter (M20 x 1.5 x 4 pcs) With Measurement Law certificate (Note 6)

Notes:

- When the 2nd input is selected, only the same kind of the 1st input is available. For example, when the 1st input is "-P1", the 2nd input must be the same "-P1". The combination of ISC and ISC is not available. And, the combination of SENCOM sensor and SENCOM sensor is not available, either.
- The FLXA21 has English and 11 languages (Chinese, Czech, French, German, Italian, Japanese, Korean, Polish, Portuguese, Russian, Spanish).
- When the FLXA21 is used in Japan, it must meet the Japanese Measurement Law. Only SI units must be used in the analyzer and its documents in Japan.
- The universal mounting kit contains the pipe and wall mounting hardware (U) and the panel mounting hardware (PM).
- The type "-EA" is intrinsically safe type of ATEX, IECEx, FM, CSA, and NEPSI, and non-incendive of FM and CSA. Temperature classes are T4 and T6. The type "-EA" cannot be used with SENCOM sensor. For SENCOM sensor, select "-ES".
- The analyzer with Japanese Measurement Law certificate is available only for the following model:
FLXA21-D-[Housing code]-D-AA-P1-NN-A-N-LA-J-NN/[option code except /K]/K
Only one pH measurement with an analog sensor is certified. The output signal of 4 - 20 mA is certified. HART communication is not certified.
- This input should be an analog pH/ORP sensor.
- When the FLXA21 is connected with a digital sensor (SENCOM[®]) such as the FU20F, the FU24F, and the SC25F, only the following selection is available.
Type: General purpose (-AA) and explosion-proof (-ES).
Explosion-proof (-ES) is available only for ATEX and IECEx
2nd input: Without input (-NN), Option: except "K"
- The type "-ES" is intrinsically safe type of ATEX, IECEx for SENCOM sensor. Temperature class is T4.

vigilantplant.[®]

The clear path to operational excellence

SEE
CLEARLY

KNOW
IN ADVANCE

ACT
WITH AGILITY

VigilantPlant is Yokogawa's automation concept for safe, reliable, and profitable plant operations. VigilantPlant aims to enable an ongoing state of Operational Excellence where plant personnel are watchful and attentive, well-informed, and ready to take actions that optimize plant and business performance.

YOKOGAWA ELECTRIC CORPORATION
World Headquarters
9-32 Nakacho 2-chome, Musashino-shi,
Tokyo 180-8750, JAPAN
Tel: +81-422-52-6316 Fax: +81-422-52-6619
<http://www.yokogawa.com/an/>

North America
YOKOGAWA CORPORATION OF AMERICA
Georgia, U.S.A
<http://www.yokogawa.com/us/>

South America
YOKOGAWA AMERICA DO SUL LTDA.
BRAZIL
<http://www.yokogawa.com.br/>

Europe
YOKOGAWA EUROPE B.V.
European Headquarters
THE NETHERLANDS
<http://www.yokogawa.com/eu/>
YOKOGAWA ELECTRIC CIS LTD.
RUSSIAN FEDERATION
<http://www.yokogawa.ru/>

Middle East
YOKOGAWA MIDDLE EAST B.S.C.(C)
<http://www.yokogawa.com/bh/>

Singapore
YOKOGAWA ENGINEERING ASIA PTE. LTD.
<http://www.yokogawa.com/sg/>

Korea
YOKOGAWA ELECTRIC KOREA CO., LTD.
<http://www.yokogawa.com/kr/>

China
YOKOGAWA CHINA CO., LTD.
<http://www.yokogawa.com/cn/>
YOKOGAWA SHANGHAI INSTRUMENTATION CO., LTD.
<http://www.ysi.com.cn/>
YOKOGAWA SICHUAN INSTRUMENT CO., LTD.
<http://www.cys.com.cn/>

Taiwan
YOKOGAWA TAIWAN CORPORATION
<http://www.yokogawa.com.tw/>

India
YOKOGAWA INDIA LTD.
<http://www.yokogawa.com/in/>

Australia
YOKOGAWA AUSTRALIA PTY. LTD.
<http://www.yokogawa.com/au/>

Represented by:

Vig-PMK-G-NL-10E
Printed in Japan, 410(KP) [Ed : 05/b]